

6

5

4

3


2



1

MATERIAL AND FINISH:

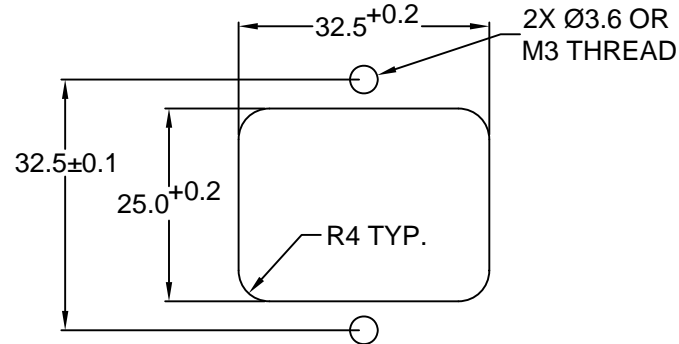
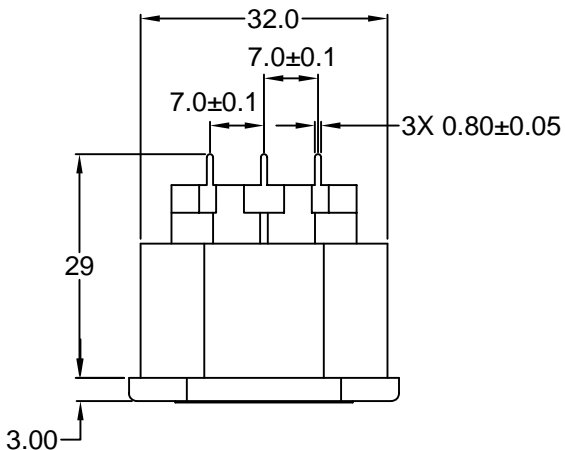
Insulator: Polycarbonate, UL-94V-0 rated
Contacts: Brass, Tin Plated

ELECTRICAL SPECIFICATIONS:

Current rating: 10 A 

Current rating: 15 A 
Voltage rating: 250 VAC 

Insulation resistance: 100 Mohm min. at 500 VDC
Dielectric withstanding voltage: 2000 VAC for one minute

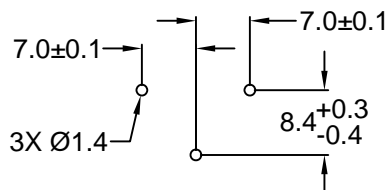
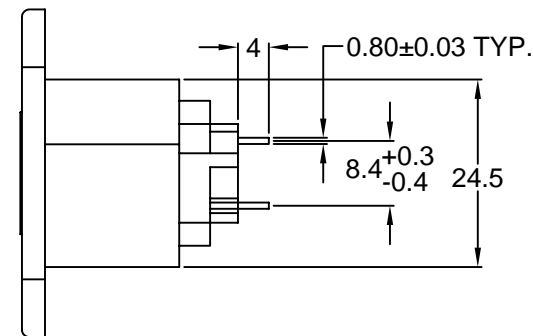
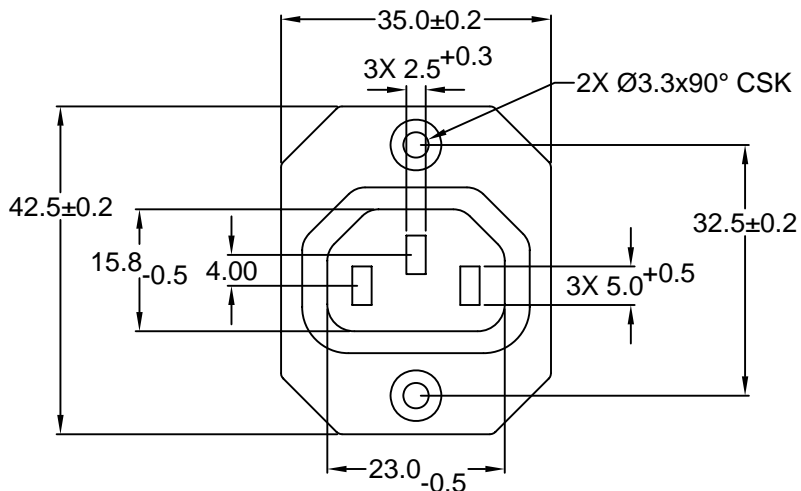


**RECOMMENDED
PANEL CUTOUT**

ORDERING CODE:

43R09-2 _ 3 2
1

- 1) COLOR
1 = BLACK
2 = GRAY



**RECOMMENDED
PCB LAYOUT**

**RoHS
COMPLIANT**

TOLERANCE UNLESS OTHERWISE SPECIFIED	
X	± 1
X.X	± 0.4
X.XX	± 0.20

Power Dynamics, Inc.
Phone: 973 560-0019 Whippany, New Jersey Fax: 973 560-0076

PART: 10A/15A IEC 60320 APPL. OUTLET; STRAIGHT
PC TERMINALS; CROSS FLANGE, PANEL MOUNT

DRAWN BY	GQ	DATE:	10/09/01
CHECK BY	TD	DATE:	10/11/01
APPR BY	PB	DATE:	10/11/01

PART #: 43R09-2X32		SHEET
SIZE: A		1 of 1
SCALE: NTS	ALL DIMENSIONS FOR REFERENCE ONLY DIMENSIONS ARE IN MILLIMETERS	REV:

D

C

B

A

REVISIONS	CHNG	CHK	APPR
REV	DATE	CHANGE	